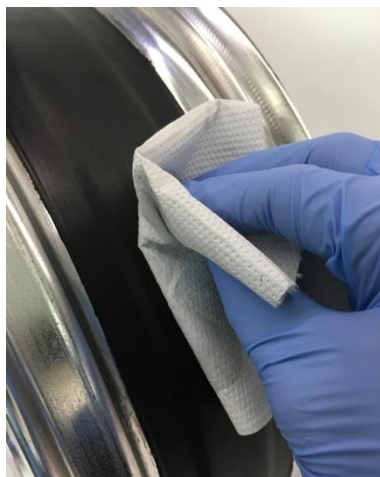


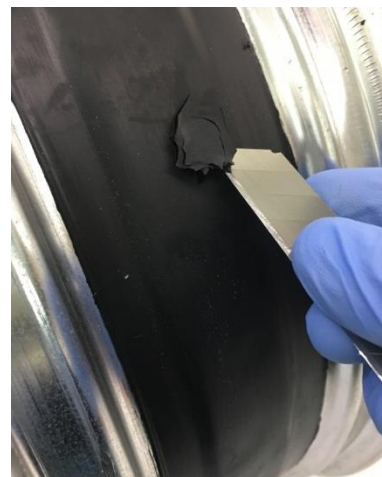
HOW TO REPLACE A SPOKE OR A NIPPLE



1 Put on the disposable gloves (included)



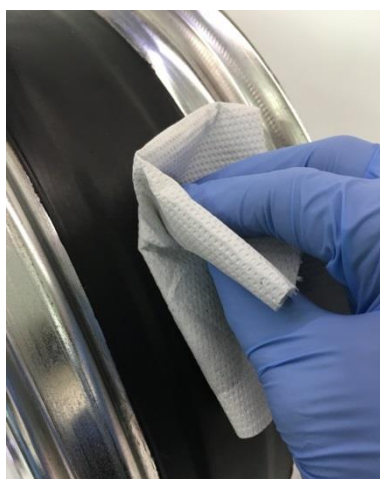
2 Carefully clean the surface to be treated with a common nitro paint diluent.



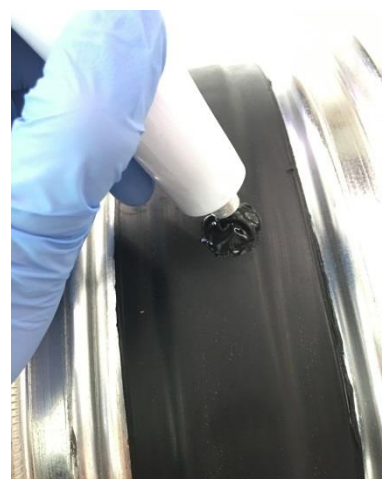
3 With a blade of a cutter, cut the polymer around the nipple until a wedge is obtained.



4 Remove the wedge thus exposing the nipple. Then, change the spoke or nipple as normal.



5 Carefully clean the surface to be treated with a common nitro paint diluent (same as 2).



6 Apply abundant BARTubeless® Polymer directly from the tube to the point to be repaired.

continues on the other side →

BARTubeless.it®

ORIGINAL REPAIR KIT

BART®

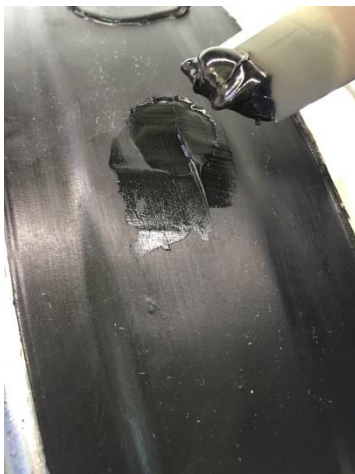
FACTORY

REINVENTING THE WHEEL

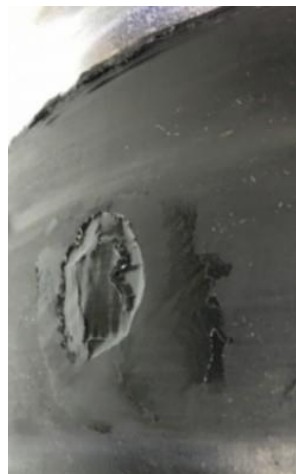
←continues from the other side

PROCEED NOW WITH
ONE OF THESE TWO
METHODS BELOW

WITHOUT PATCH ➔



7a With the cutter blade or a spatula, level the polymer by removing the excess material.



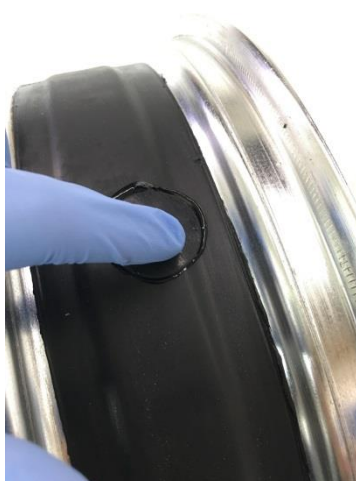
8a Wait 24 to 48 hours for the complete polymerization of the product before remounting the tire.

✓ DONE!

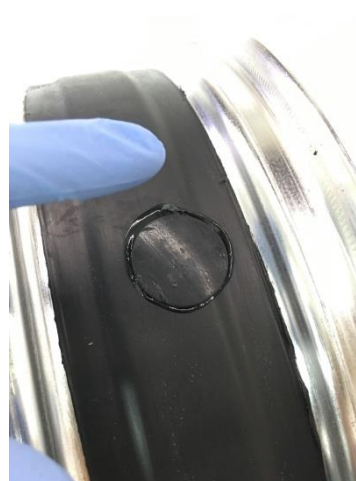
▼ WITH PATCH
for faster repair



7b Apply the patch (included) directly onto the fresh polymer before it hardens.



8b Firmly press until excess material is overflowed, then remove excess.



9b Wait few hours: when the patch is no longer moveable to the touch, you can carefully remount the tire.

✓ DONE!