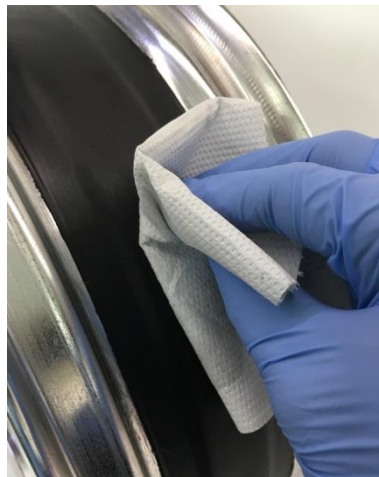


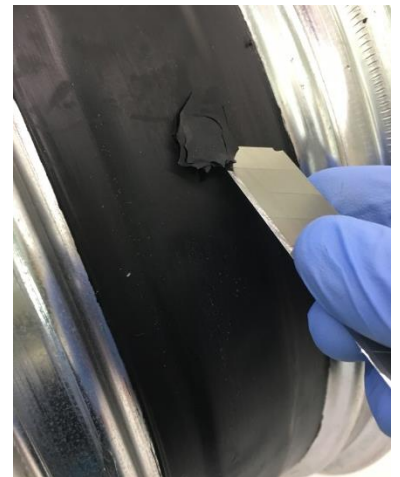
## HOW TO REPLACE A SPOKE OR A NIPPLE



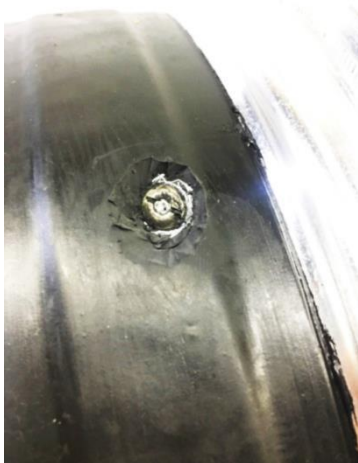
**1** Put on the disposable gloves (included)



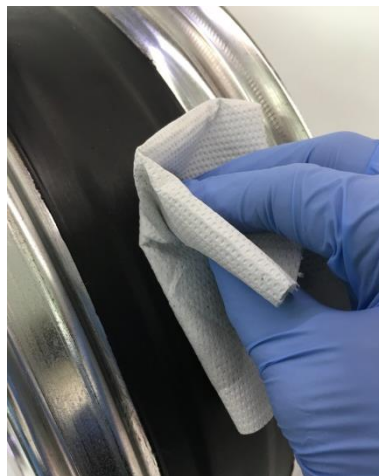
**2** Carefully clean the surface to be treated with a common nitro diluent.



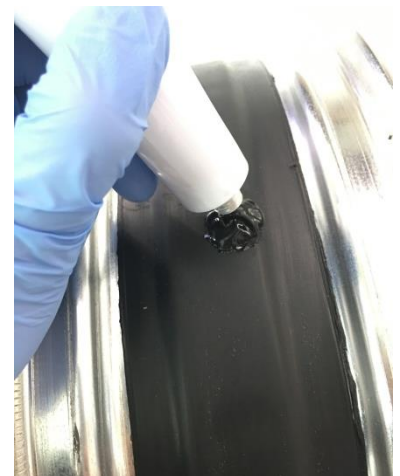
**3** With a blade of a cutter, cut the polymer around the nipple until a wedge is obtained.



**4** Remove the wedge thus exposing the nipple. Then, change the spoke or nipple as normal.



**5** Carefully clean the area to be repaired with a common nitro diluent.



**6** Apply abundant BARTubeless® Polymer directly from the tube to the point to be repaired.

continues on the other side→

# BARTubeless.it<sup>®</sup>

## ORIGINAL REPAIR KIT

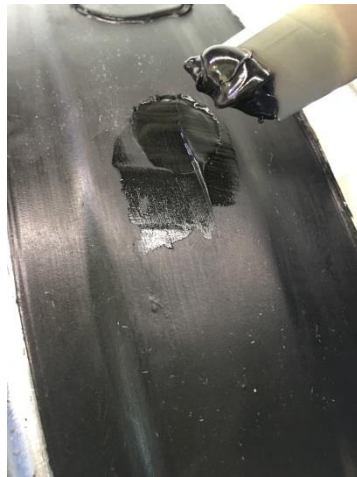
**BART<sup>®</sup>**  
**FACTORY**  
REINVENTING THE WHEEL

[www.bartfactory.com](http://www.bartfactory.com)

← continues from the other side

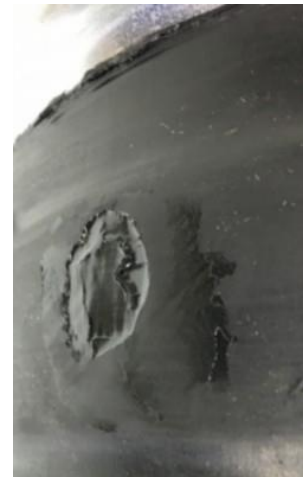
PROCEED NOW WITH ONE  
OF THESE TWO METHODS  
BELOW

WITHOUT PATCH



**7a**

With the cutter blade or a spatula, level the polymer by removing the excess material.



**8a**

Wait 24 to 48 hours for the complete polymerization of the product before remounting the tire.

✓ DONE!

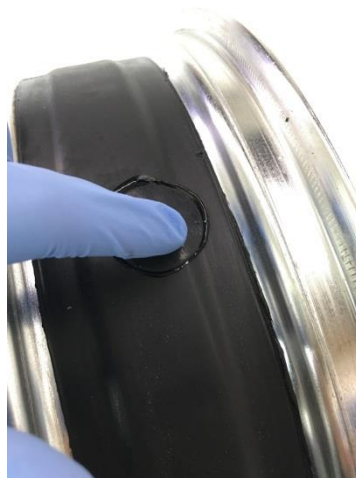


WITH PATCH  
for faster repair



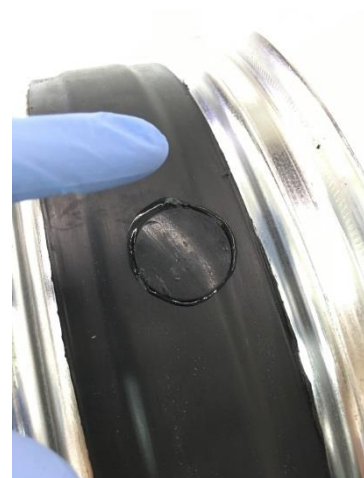
**7b**

Apply the patch (included) directly onto the fresh polymer before it hardens.



**8b**

Firmly press until excess material is overflowed, then remove excess.



**9b**

Wait few hours: when the patch is no longer moveable to the touch, you can carefully remount the tire.

✓ DONE!